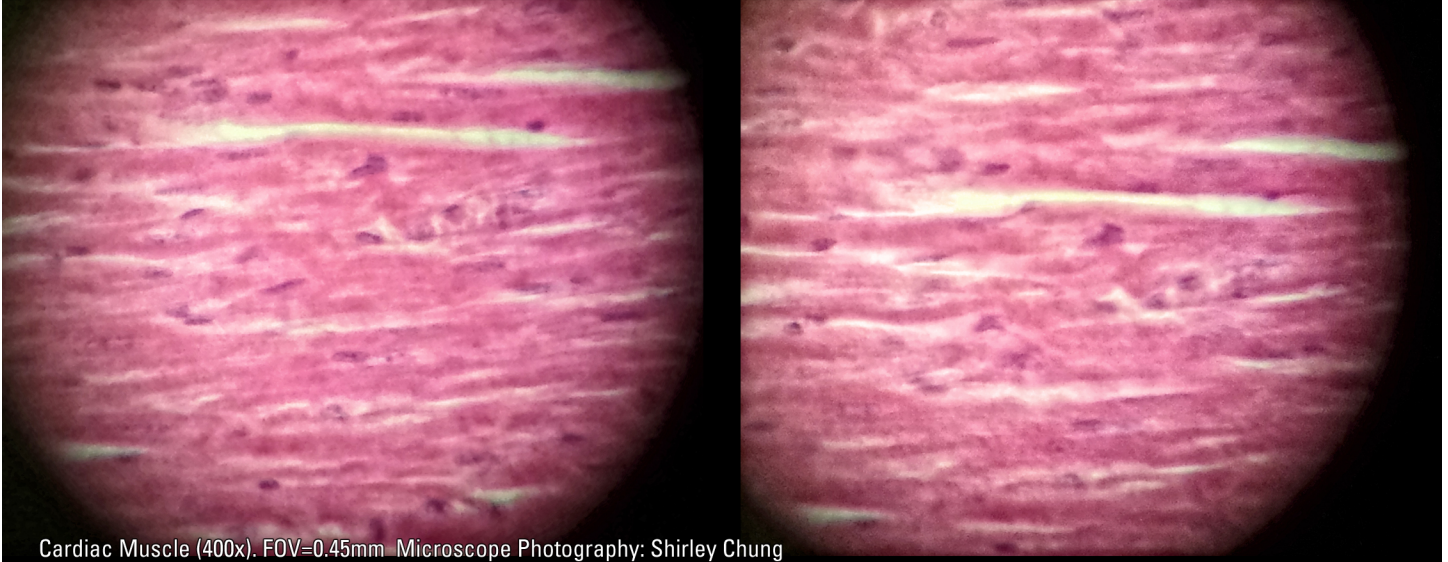


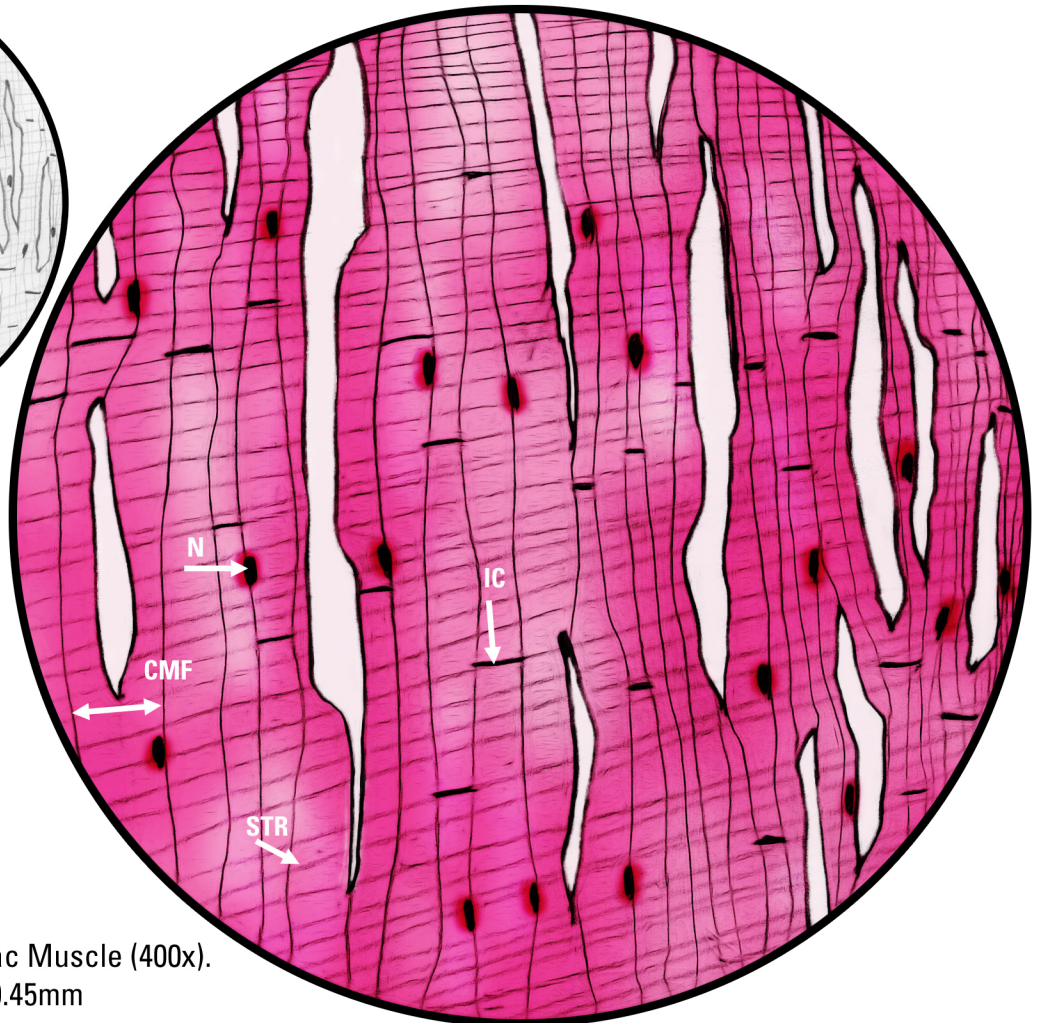
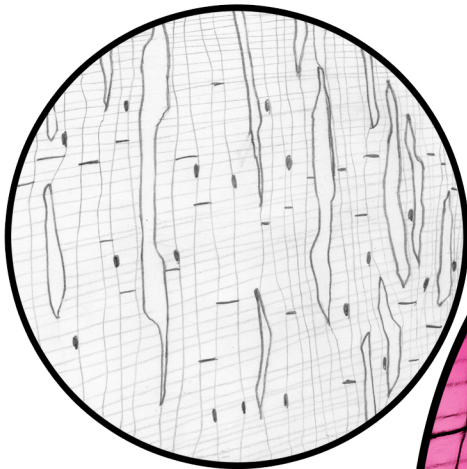
HISTOLOGY: Muscle Tissues—Cardiac

Locations: in the heart.

Functions: autonomic, contract/relax to pump blood.



Cardiac Muscle (400x). FOV=0.45mm Microscope Photography: Shirley Chung



Key

- N, Nucleus
- CMF, Cardiac Muscle Fiber
- IC, Intercalated Disc
- STR, Striations
- FOV, Field of View

Cardiac Muscle (400x).
FOV=0.45mm