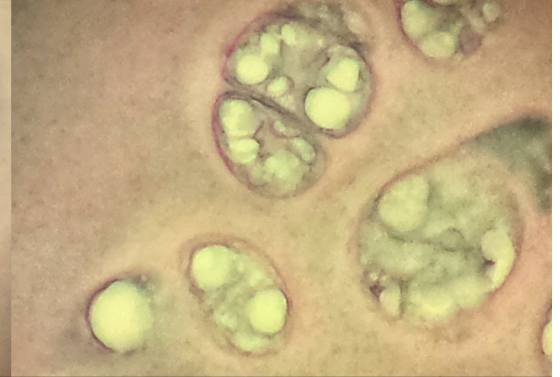
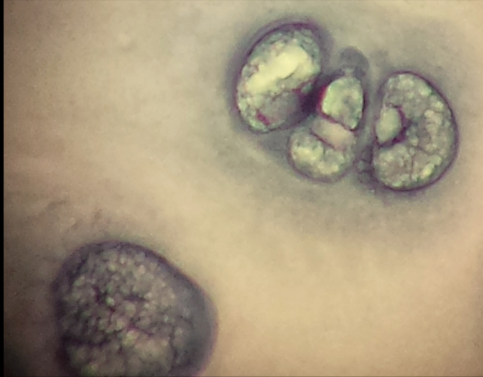
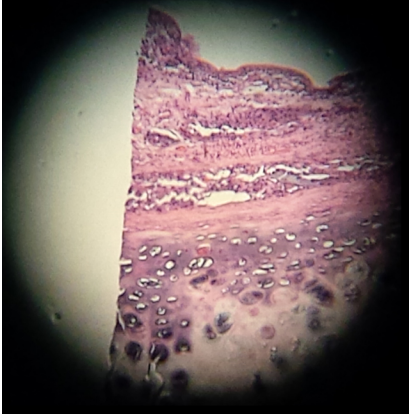


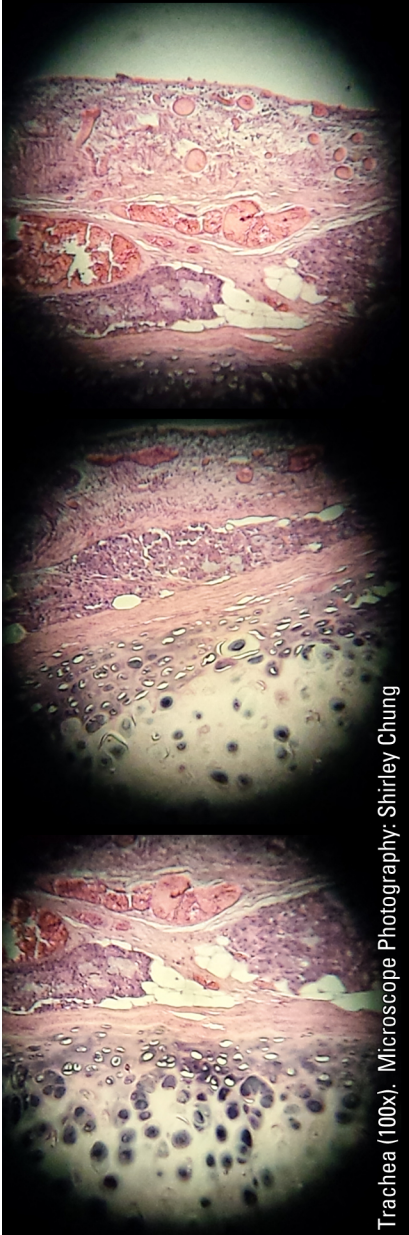
## HISTOLOGY: Connective Tissues—Cartilage, Hyaline (Trachea)

Locations: embryonic skeleton, ends of long bones in joint cavities, costal cartilages, nose, trachea, larynx.

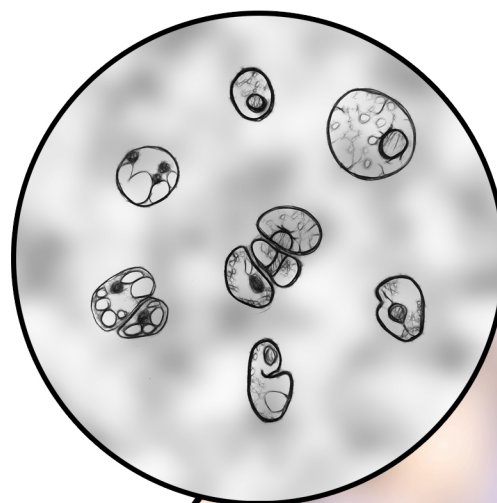
Functions: supports, reinforces, cushioning, resist compressive forces/stress.



Hyaline (400x). Microscope Photography: Shirley Chung

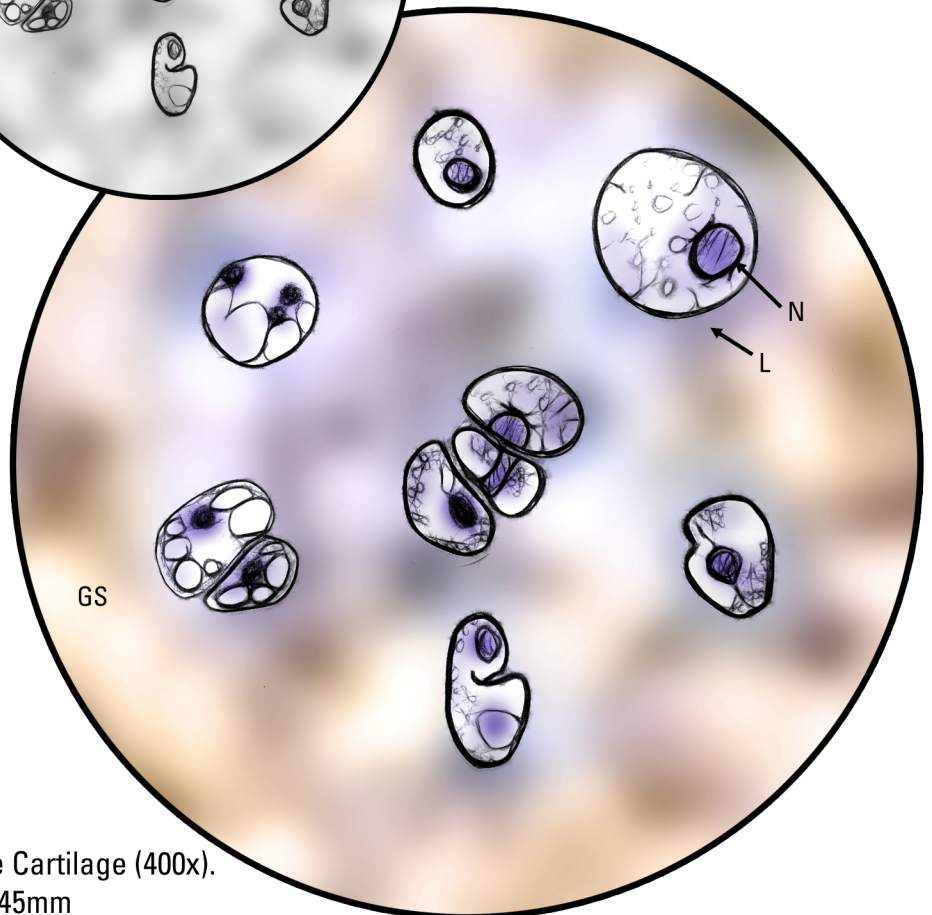


Trachea (100x). Microscope Photography: Shirley Chung



Key

- GS, Ground Substance
- N, Nucleus of Chondrocyte
- L, Lacuna Containing Chondrocyte
- FOV, Field of View



Hyaline Cartilage (400x).  
FOV=0.45mm