

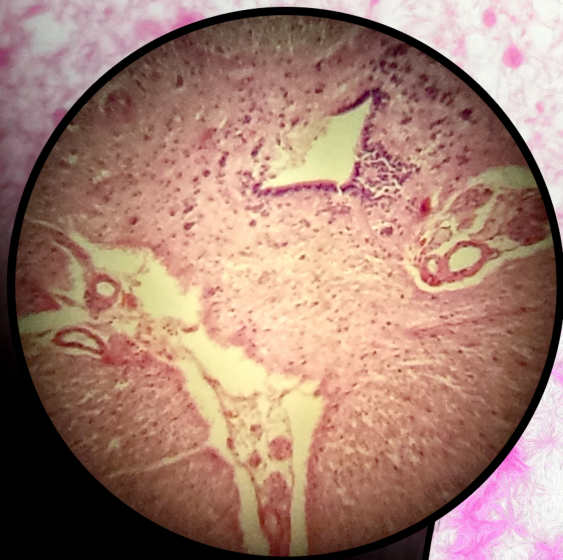
HISTOLOGY: Nervous Tissues

Locations: in spinal cord, brain, nerves.

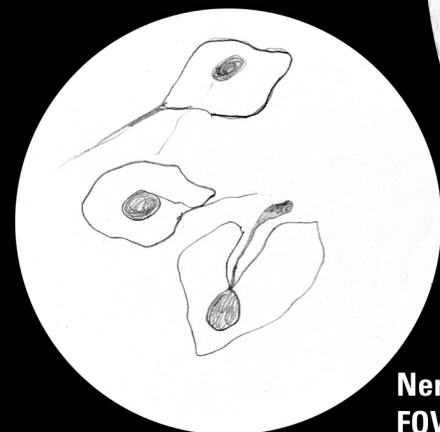
Functions: transmit electrical signals, coordinate/control activities.

Key

- NS, Neuron of Supporting Cells
- NB, Neuron Body
- N, Neuron Process
- FOV, Field of View



Nerve (4x) FOV=4.5mm
Microscope Photography: Shirley Chung



Nerve Tissue (x400)
FOV=0.45mm

