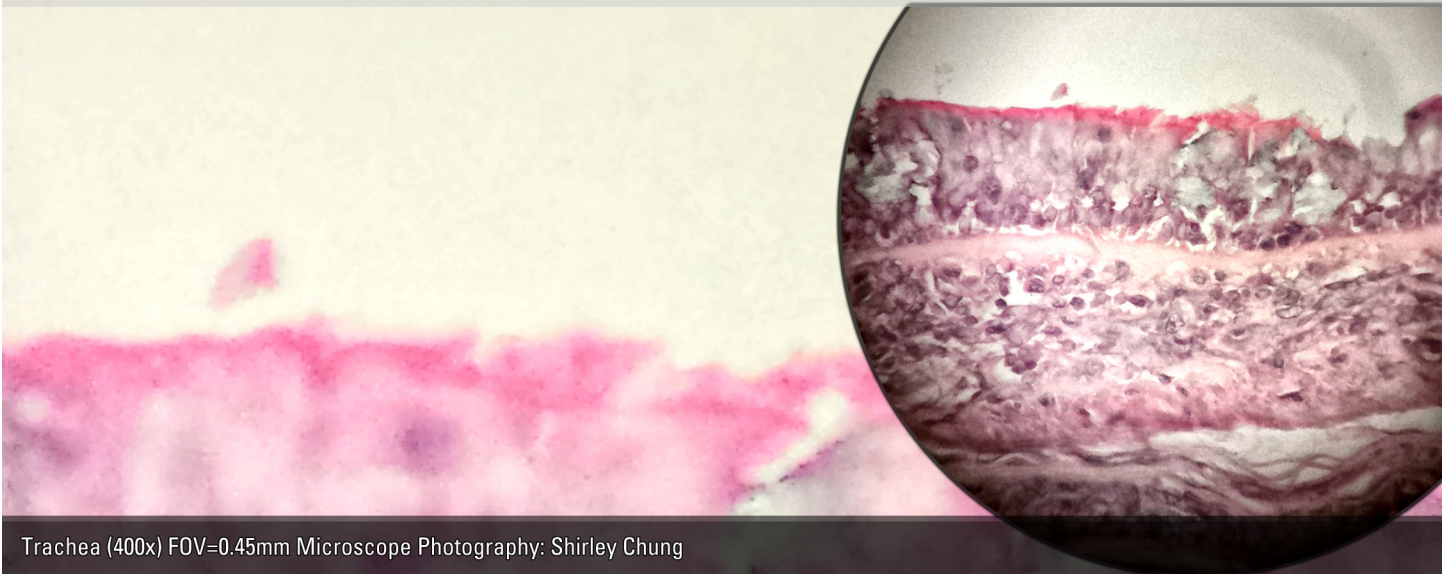


HISTOLOGY: Epithelial Tissues—Pseudostratified Ciliated Columnar (Trachea)

Locations: Non-Ciliated (large glands, male urethra); Ciliated (trachea, upper respiratory tract).

Functions: secretion (especially mucous), cilia for propulsion/movement of fluids/mucous.



Trachea (400x) FOV=0.45mm Microscope Photography: Shirley Chung

Key

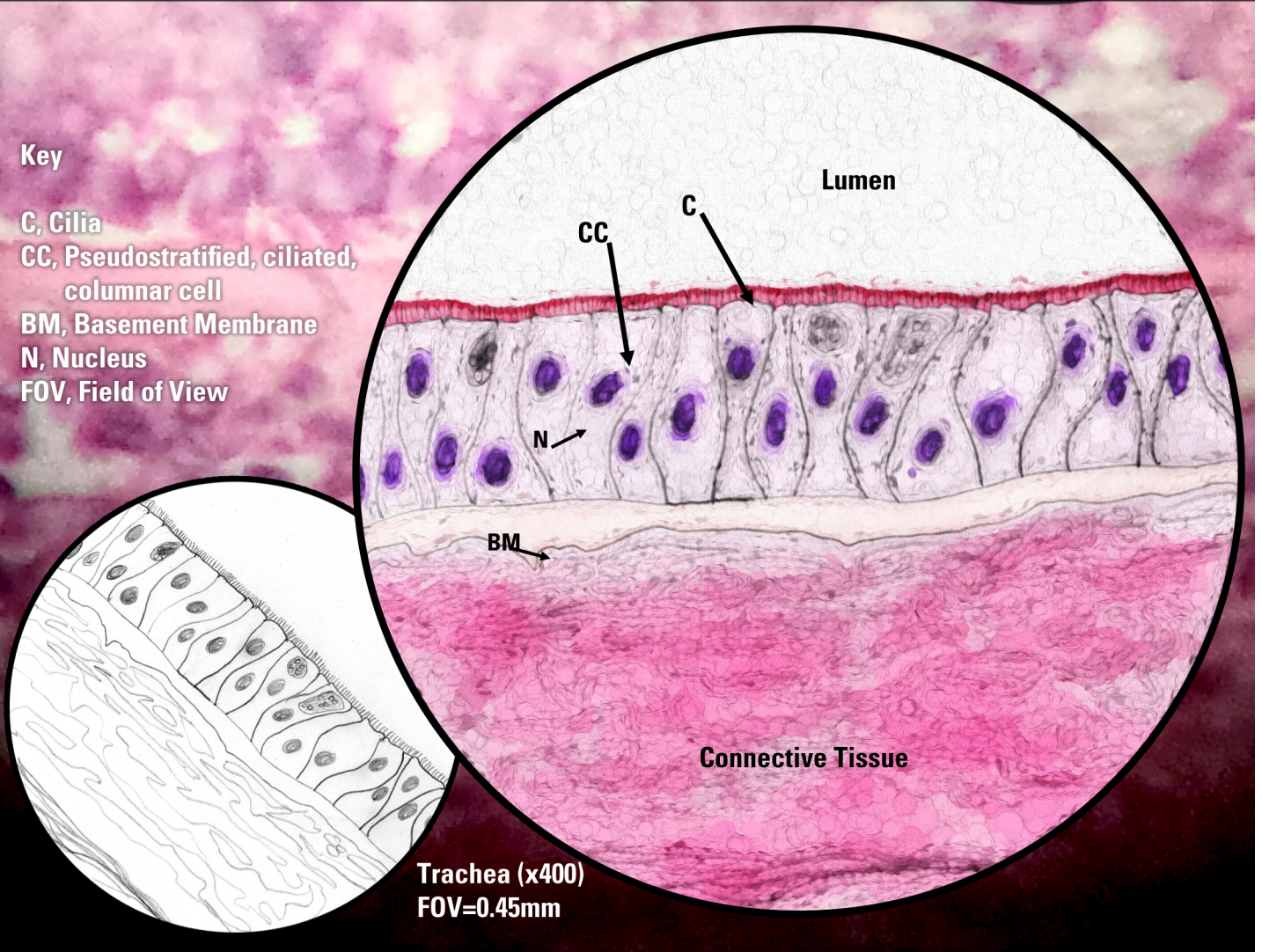
C, Cilia

CC, Pseudostratified, ciliated,
columnar cell

BM, Basement Membrane

N, Nucleus

FOV, Field of View



Trachea (x400)
FOV=0.45mm