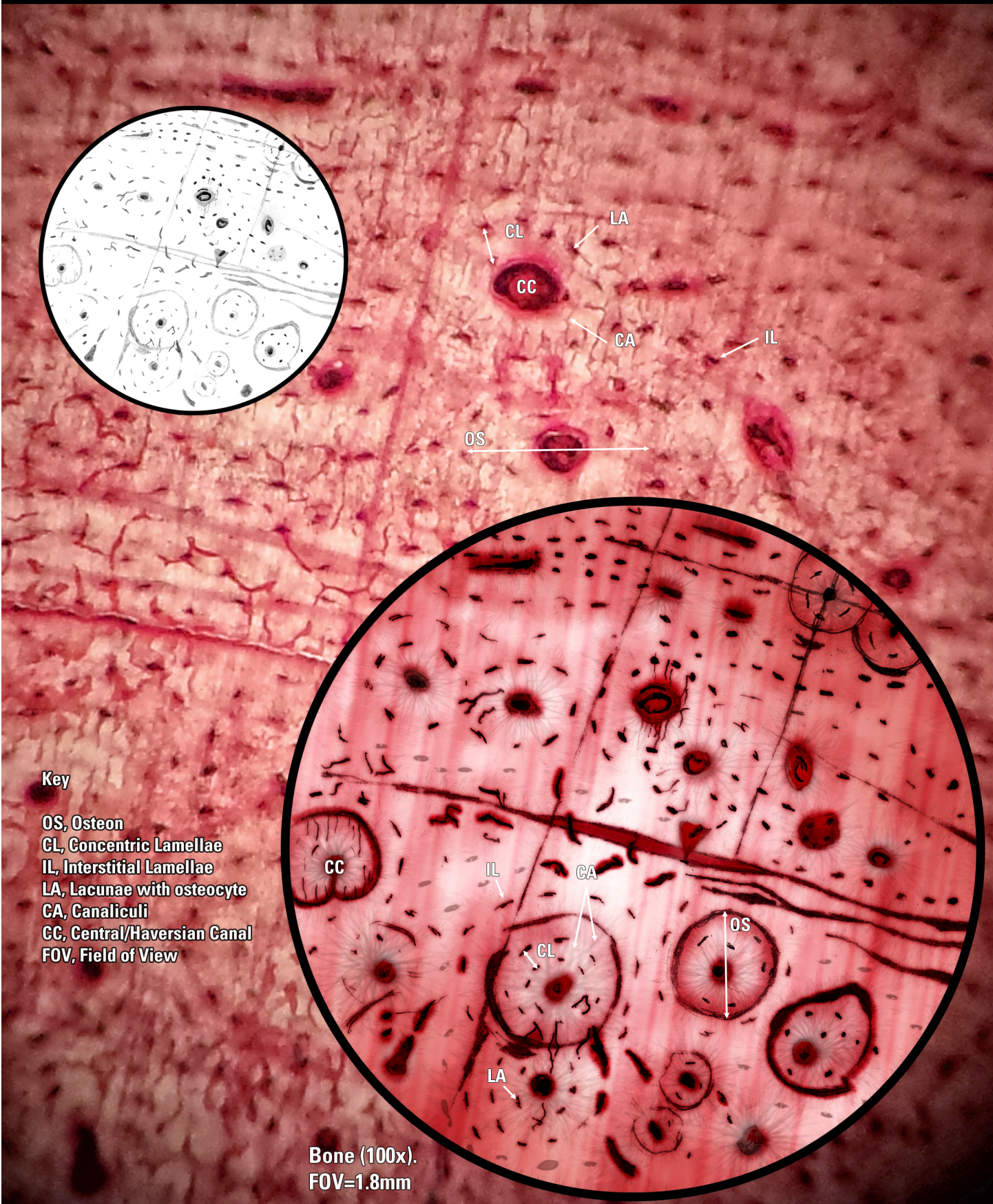


**HISTOLOGY: Bone Tissue (100x)**



**Key**

- OS, Osteon
- CL, Concentric Lamellae
- IL, Interstitial Lamellae
- LA, Lacunae with osteocyte
- CA, Canaliculi
- CC, Central/Haversian Canal
- FOV, Field of View

**Bone (100x).**  
**FOV=1.8mm**