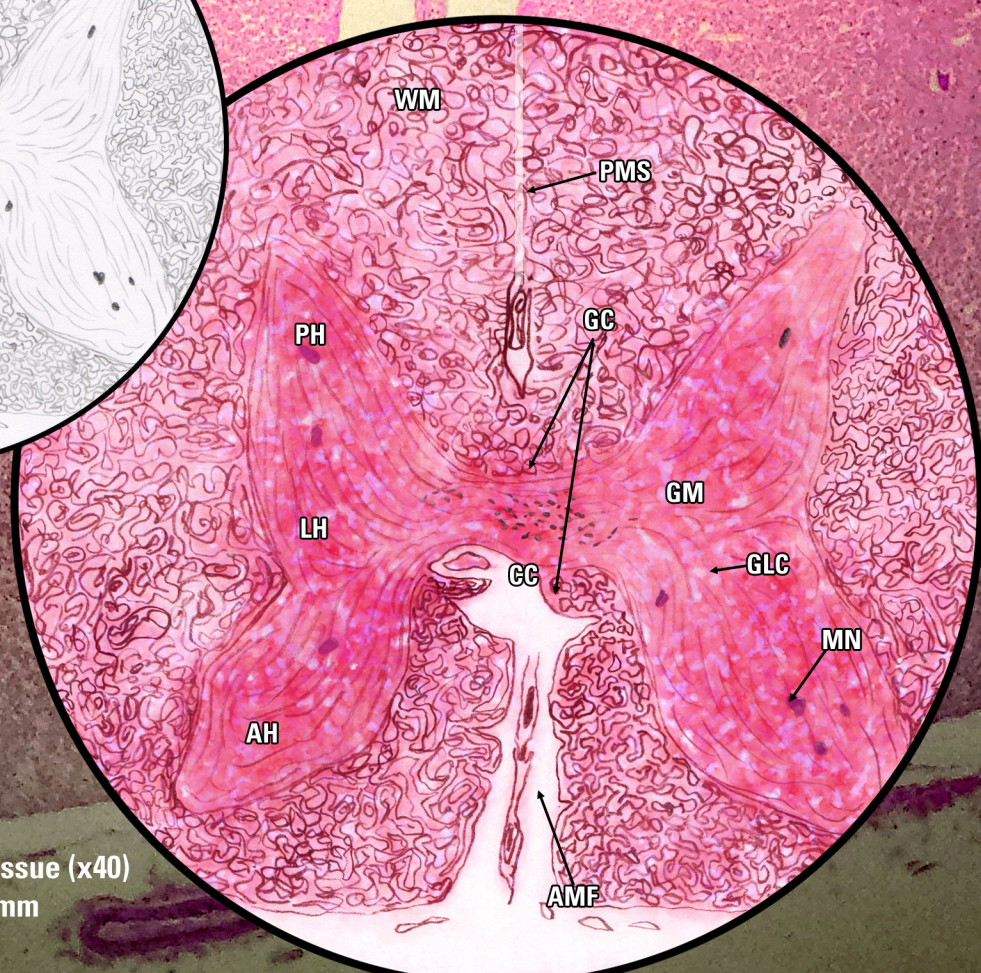
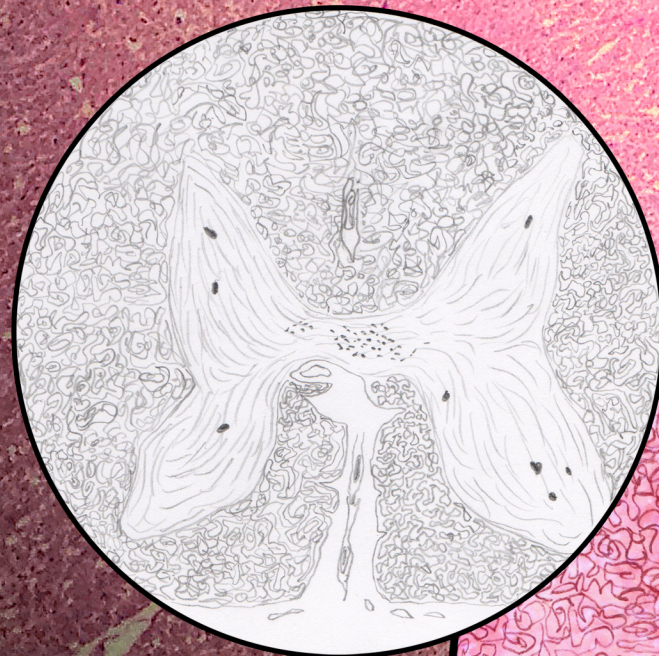


HISTOLOGY: Nervous Tissue - Spinal Cord (40x)

Key

- GM, Gray Matter
- WM, White Matter
- AH, Anterior Horn
- LH, Lateral Horn
- PH, Posterior Horn
- PMS, Posterior Median Sulcus
- AMF, Anterior Median Fissure
- GC, Gray Commissure
- CC, Central Canal
- MN, Motor Neurons
- GLC, Glial Cells



Nerve Tissue (x40)
FOV=4.5mm