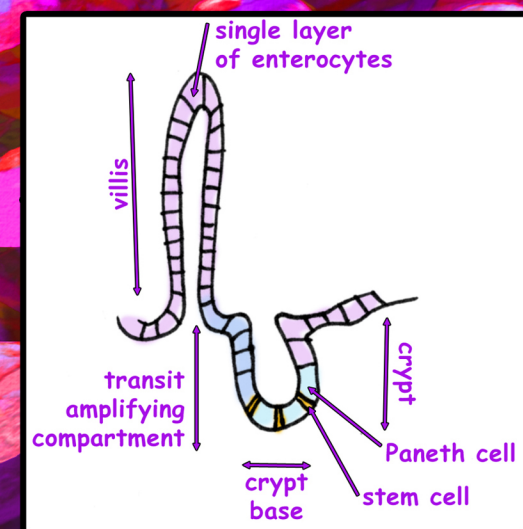
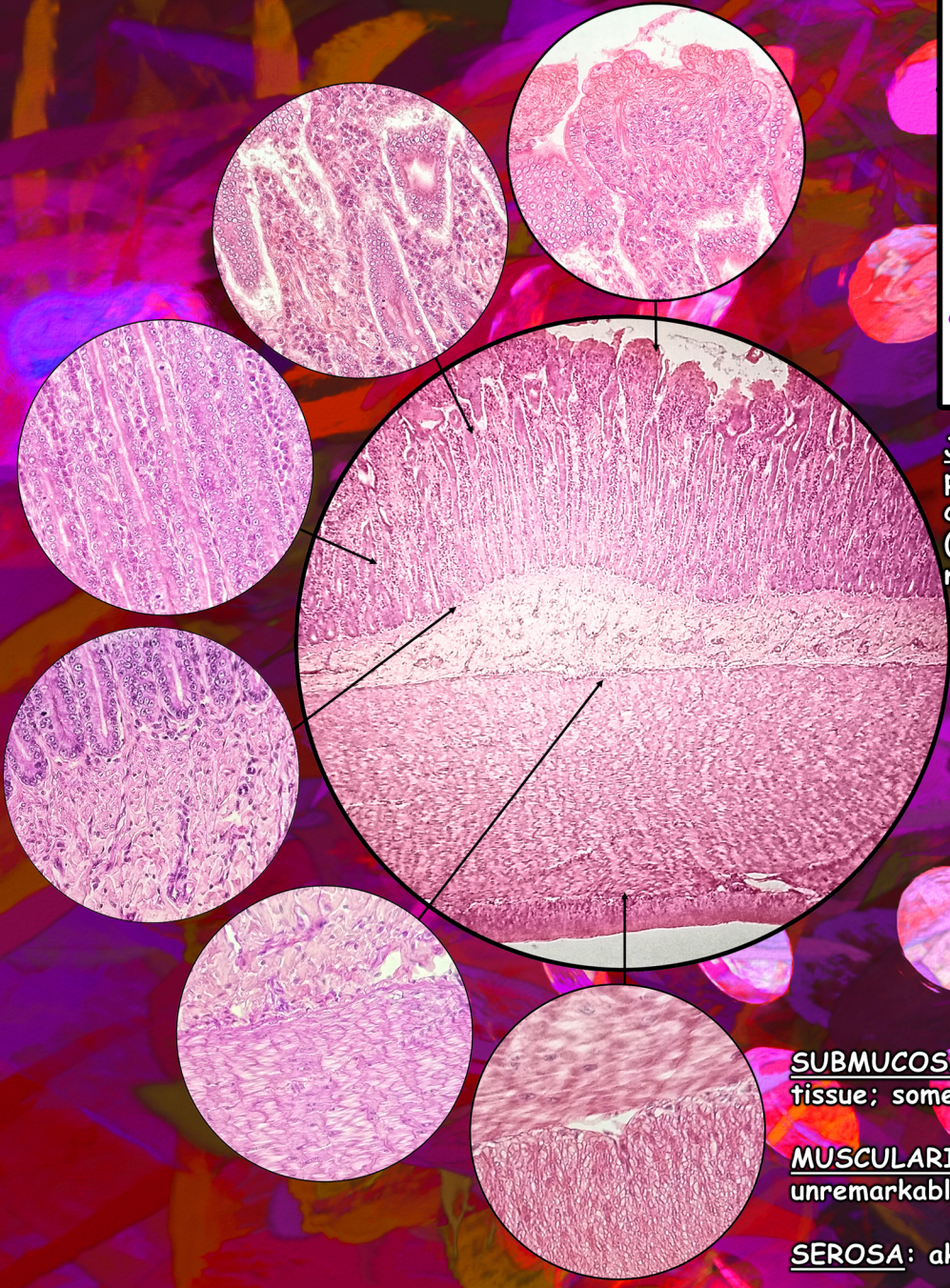


THE JEJUNUM

I LEARNED EVERYTHING I NEEDED TO KNOW FROM COMICS: ANATOMY & PHYSIOLOGY SERIES
 Shirley Chung, BIOL242, V, SAPUNAR, 02.13.2017

DJ ICE
 is in da HOUZ!



JEJUNUM: "most absorptive"; most prominent plica circulares; few goblet cells compared to duodenum; few Peyer's patches (main feature of ileum) at proximal end but more at distal end heading towards ileum.

MUCOSA: relative lack of goblet cells; relative abundance of absorptive cells; more delicate, well-formed villi; distinctive plica circulares; lacteals (with some smooth muscle surrounding lacteals) in lamina propria as well as lymphocytes, macrophages, plasma cells; thin strip of muscularis mucosae; really red stains at the base of the villi in the mucosal layer may be paneth cells with dark reddish granules (on apical aspect); looser, more delicate connective tissue of lamina propria.

SUBMUCOSA: relative lack of lymphoid tissue; loose connective tissue; some blood vessels and adipose.

MUSCULARIS EXTERNA: typical presentation with some ganglion cells; unremarkable.

SEROSA: aka visceral peritoneal; not abundant but note the mesothelial cells.

