

GRAAFIAN FOLLICLE I

I LEARNED EVERYTHING I NEEDED TO KNOW FROM COMICS: ANATOMY & PHYSIOLOGY SERIES
 Shirley Chung, BIOL242, V, SAPUNAR, 02.27.2017

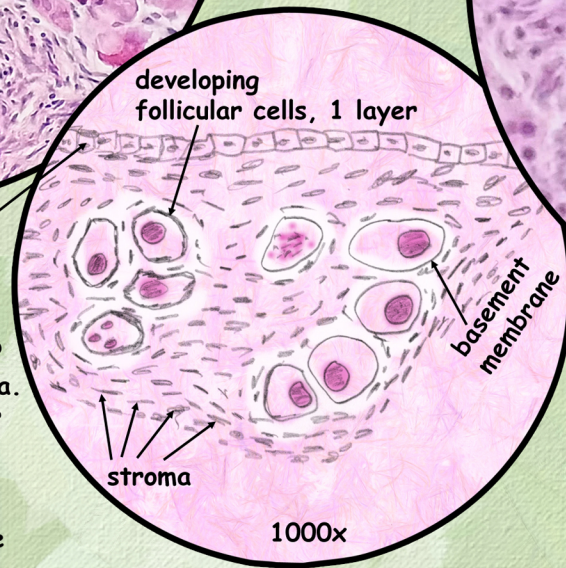


1000x

germinal epithelium:
 squamous to simple cuboidal

PRIMORDIAL FOLLICLES

Germ cells differentiate into oogonia. Develop into primary oocytes. Enter meiosis I, and put on hold in first prophase. At puberty, with FSH, complete first meiotic division, become secondary oocytes. Continue on to meiosis II.

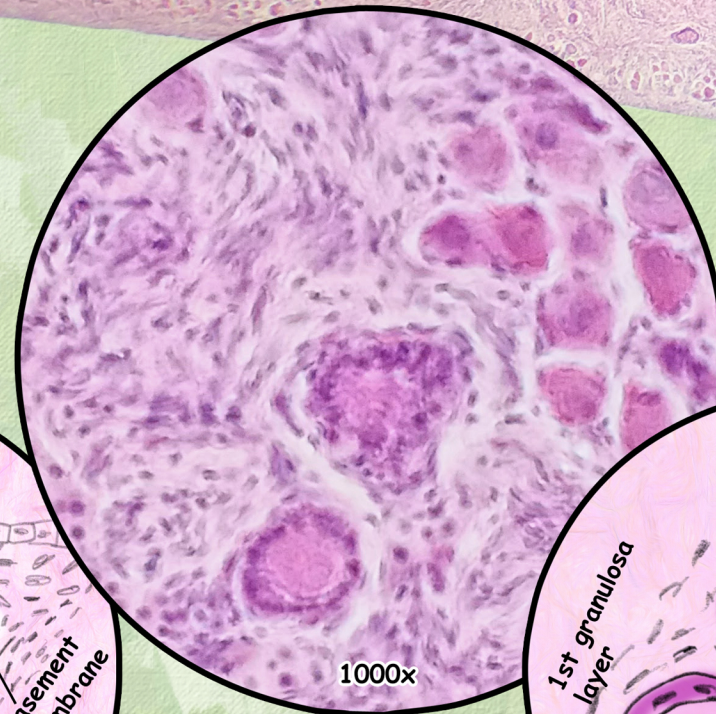


1000x

developing
 follicular cells, 1 layer

basement
 membrane

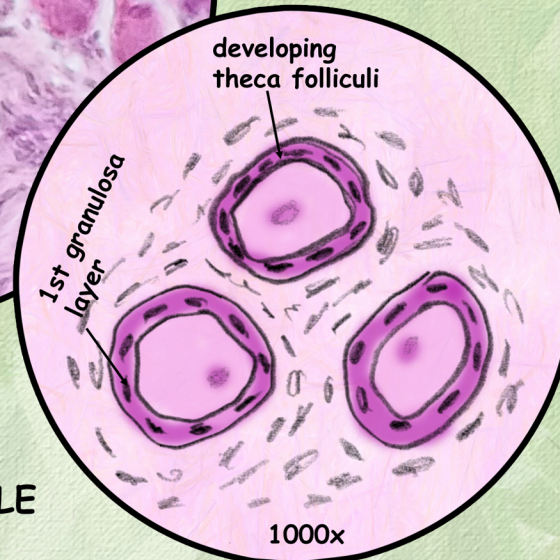
stroma



1000x

Early Primary Follicle

PRIMARY FOLLICLE

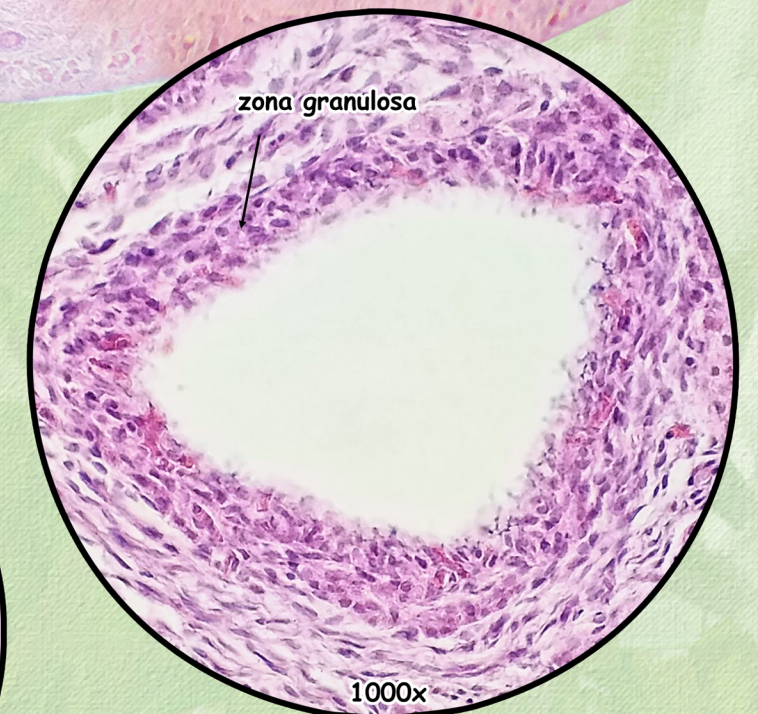


1000x

developing
 theca folliculi

1st granulosa
 layer

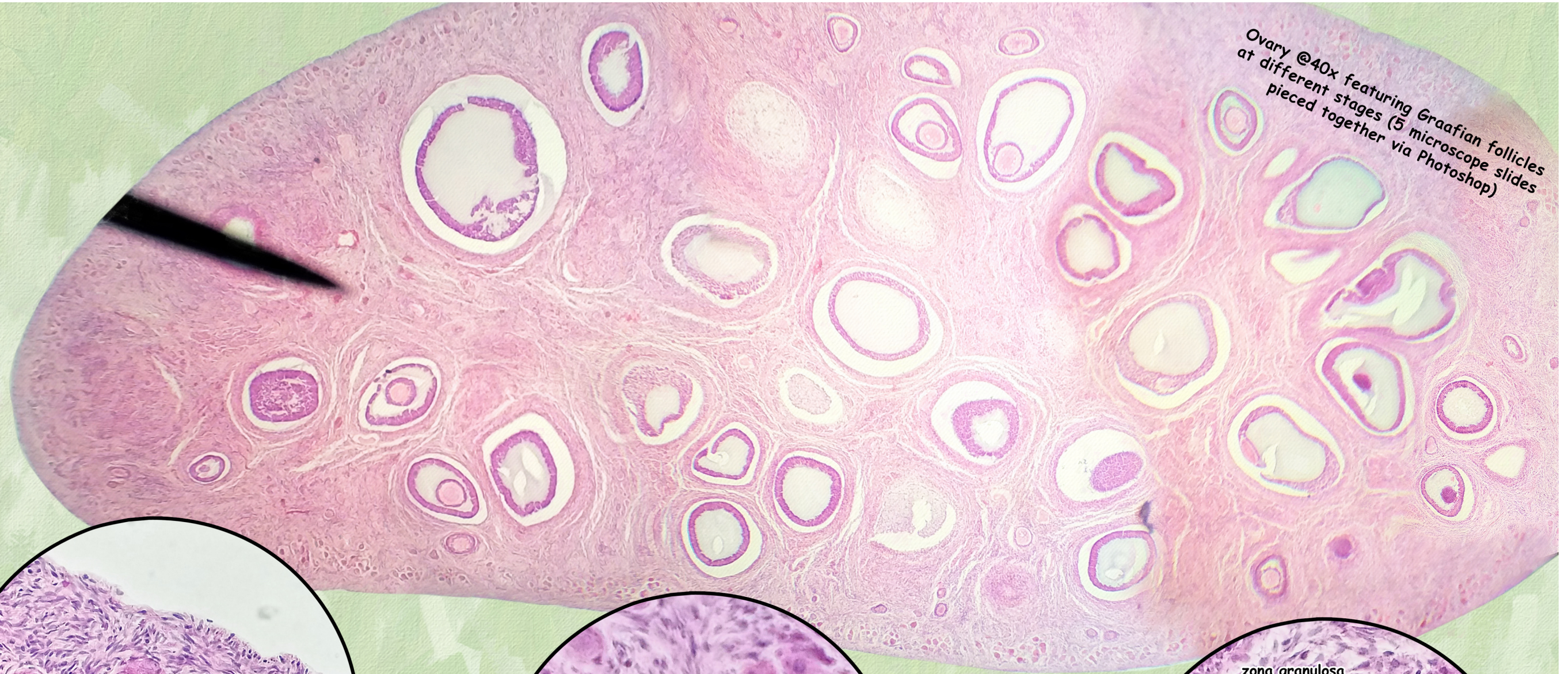
Early Primary Follicle



1000x

zona granulosa

Developing Primary Follicle
 Proliferation.



Ovary @40x featuring Graafian follicles
 at different stages (5 microscope slides
 pieced together via Photoshop)